



# altitude<sup>®</sup>

## WORKWEAR

2024 | 2025





### 100% Acrylic

A soft, lightweight and warm synthetic fibre that is colourfast, wrinkle-resistant, and easy to care for.



### NRCS Approved

Approved by the National Regulator For Compulsory Specifications.



### Steel Toe Cap

Reinforced with a steel toe cap, offering additional protection against foot related injuries in the workplace.



### 100% Cotton

Extremely durable & comfortable. This natural fabric is hypoallergenic & breathable.



### SABS Approved

Meets the highest standards for quality, safety & reliability.



### Rainproof

Treated to repel & resist the penetration of water, even in the toughest wet weather conditions.



### 100% Polyester

Extremely durable & crease resistant. It's colourfast, quick drying & stain resistant. Easy to clean & maintain.



### Day / Night Visibility

A combination of high visibility fabrics that are effective in low light conditions during the day & at night.



### Water Resistant

Fabric has been treated to repel & resist the penetration of water, however, is not 100% waterproof.



### Polycotton

A low maintenance blend that is breathable, crease resistant & colourfast. It's less prone to piling & shrinking.



### Reflective

Premium quality reflective tape is applied for increased visibility in high-risk environments, at night & in poor light conditions.



### Wind Resistant

Provides a barrier against the wind to reduce the loss of warmth and retain body heat in a cold climate.



### Acid Resistant & Flame Retardant

A chemically treated fabric that resists the corrosive effects of acids & alkalis, with the addition of flame retardants for protection against fire hazards.



### Heat Resistant 90°C

Offers protective thermal insulation in environments with temperatures as high as 90°C.



### Windproof

Manufactured using a tightly woven fabric designed for insulation, warmth & comfort.



### Acid Resistant

A chemically treated fabric that resists the corrosive effects of acids & alkalis in high-risk working environments.



### Temperature -5°C

Offers protective thermal insulation in environments with temperatures as low as -5°C.



### UV Protection

Manufactured with fabric rated for its high level of ultraviolet protection.



### Flame Retardant

Chemically treated with flame retardants for protection against fire hazards.



### Temperature -15°C

Offers protective thermal insulation in environments with temperatures as low as -15°C.



### Taped Seams

Seams have been taped & heat sealed to enhance water-resistant properties.



### Breathable

Allows air to pass through easily. Aids in moisture management, reduces sweat & keeps you cool.



### Locally Manufactured

Proudly manufactured in South Africa.



### Triple Stitched

Triple stitched at the seams for improved strength & durability.



### Stretch Fabric

Flexible, versatile and comfortable providing greater comfort and freedom of movement.



### Manufactured in the SADC Region

Manufactured in the Southern African Development Community (SADC). Increasing economic development & growth in 16 countries in SA.



### Vented

Vented panels allow air to easily flow through the garment. Keeps you cool in high temperature environments.



### Easy Care

Ideal for everyday wear. Requires low maintenance & is easy to clean & crease resistant.



### Oil Resistant

Treated to resist the corrosive effects caused by oil & other oil-based agents.



### YKK Zipper

World renowned for its reliability & durability.



### CE Certified

Manufactured in compliance with health, safety & environmental protection standards.



### Slip Resistant

Designed with slip resistant properties. Tested & approved to meet the highest quality standards for safety, comfort & reliability.



### Zip-Off Sleeves

A 2-in-1 garment with a design that features convenient zip-off sleeves.



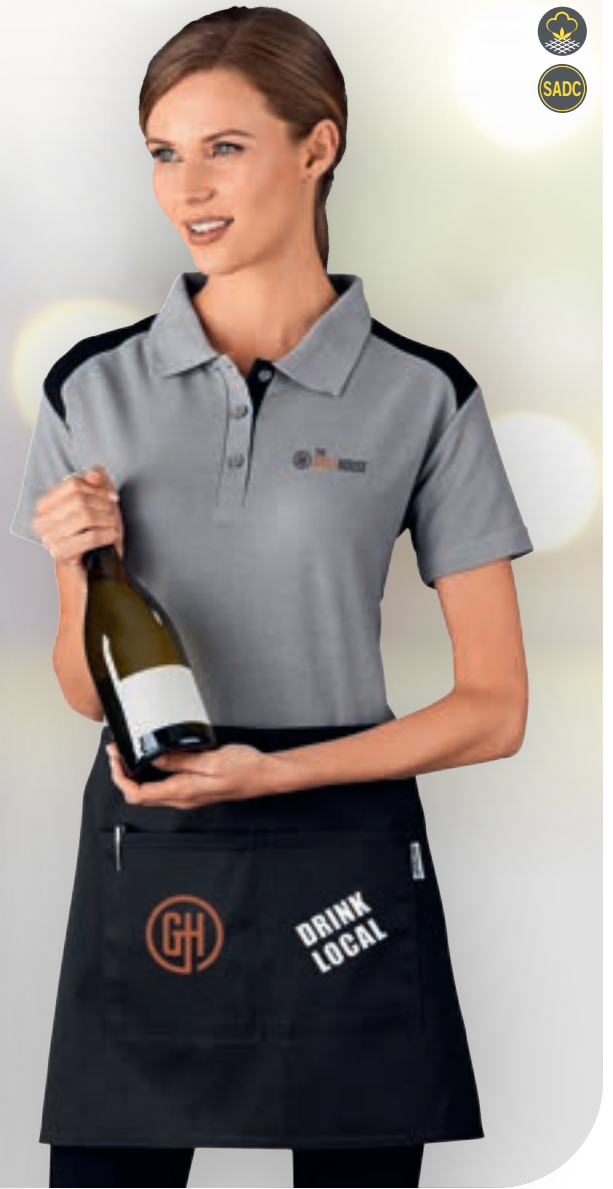


# HOSPITALITY





Turn up the heat in a **FAST-PACED KITCHEN** with our **STYLISH AND FUNCTIONAL** range of **HOSPITALITY** wear. Ideal for restaurants, hotels, bakeries, canteens, butcheries, game lodges and beyond, this premium collection provides **ESSENTIAL PROTECTION AND COMFORT** for your team.



ALT-WAP  
**PROMO WAITERS APRON**

<b>Weight</b>	200g/m <sup>2</sup>
<b>Fabric</b>	polycotton twill
<b>Description</b>	half apron • front patch pocket • herringbone tape back ties
<b>Colours</b>	<input checked="" type="radio"/> BL <input type="radio"/> W
<b>Width:</b> 67cm	<b>Length:</b> 38cm



PRICE INCLUDES SCREEN PRINT. SEE **PAGE 3** FOR DETAILS.



OKIYO®



HL-OK-119-B  
**OKIYO GOHAN COTTON APRON**

**Weight** 240g/m<sup>2</sup>

**Fabric** 100% cotton

**Description** two front patch pockets • back ties

**Colours** NT

**Chest:** 26.5cm **Width:** 70cm **Length:** 86cm

PRICE INCLUDES SCREEN PRINT. SEE **PAGE 3** FOR DETAILS.



ALT-TRI  
**KIDS TRICKLE BIB APRON**

<b>Weight</b>	200g/m <sup>2</sup>
<b>Fabric</b>	polycotton twill
<b>Description</b>	adjustable neck strap • front patch pocket • back ties
<b>Colours</b>	<input checked="" type="radio"/> BL <input type="radio"/> W
<b>Chest:</b> 20cm	<b>Width:</b> 42cm <b>Length:</b> 66cm





ALT-PBA  
**PROMO BIB APRON**

<b>Weight</b>	200g/m <sup>2</sup>
<b>Fabric</b>	polycotton twill
<b>Description</b>	front patch pocket • back ties
<b>Colours</b>	<input checked="" type="radio"/> BL <input type="radio"/> G <input type="radio"/> N <input type="radio"/> O <input type="radio"/> R <input type="radio"/> RB <input type="radio"/> W
<b>Chest:</b> 25cm	<b>Width:</b> 67cm <b>Length:</b> 85cm

PRICE INCLUDES SCREEN PRINT. SEE PAGE 3 FOR DETAILS.



BAS-2106  
**SLATER APRON**

**Weight** 210g/m<sup>2</sup>

**Fabric** polycotton twill

**Description** double front pocket • back ties

**Colours** BL KH L N R SW

**Chest:** 28cm **Width:** 69cm **Length:** 97cm





ALT-BLG  
**BOLGER BUTCHERS APRON**

<b>Weight</b>	240g/m <sup>2</sup>	
<b>Fabric</b>	100% cotton	
<b>Description</b>	classic butchers bib apron • adjustable neck strap • contrast back ties	
<b>Colours</b>	<input checked="" type="radio"/> N <input checked="" type="radio"/> R	
<b>Chest:</b>	<b>Width:</b>	<b>Length:</b>
30cm	70cm	87cm



ALT-CRW  
**CREW WAITERS APRON**

<b>Weight</b>	6oz
<b>Fabric</b>	100% cotton
<b>Description</b>	classic waiters apron • double front pockets secured with metal rivets
<b>Colours</b>	<b>DB</b>
<b>Width:</b>	78.5cm
<b>Length:</b>	41cm





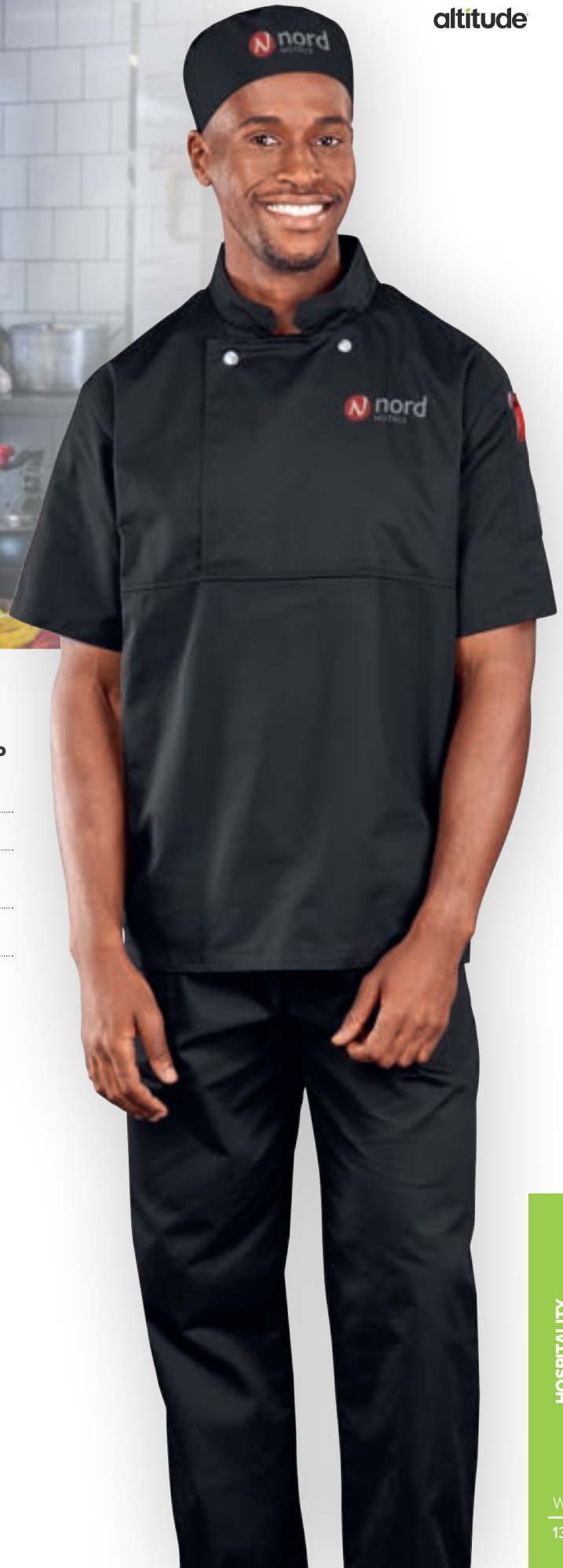
ALT-CRB  
**CREW BIB APRON**

<b>Weight</b>	6oz	
<b>Fabric</b>	100% cotton	
<b>Description</b>	neck straps through metal eyelets • chest pocket • side pocket	
<b>Colours</b>	<b>DB</b>	
<b>Chest:</b> 30cm	<b>Width:</b> 70cm	<b>Length:</b> 87cm

PRICE INCLUDES SCREEN PRINT. SEE **PAGE 3** FOR DETAILS.







ALT-CNS  
**UNISEX SHORT SLEEVE CANNES UTILITY TOP**



**Weight** 195g/m<sup>2</sup>

**Fabric** 65% polyester, 35% cotton

**Description** double breasted front panel with two press studs  
 • thermometer sleeve pocket

**Colours**  BL  W

HALF CHEST (CM)

SIZE	XS	S	M	L	XL	2XL	3XL	4XL	5XL
CM	53	56	59	62	65	68	71	74	77



PRICE INCLUDES EMBROIDERY. SEE PAGE 3 FOR DETAILS.





ALT-ZSS

**UNISEX SHORT SLEEVE ZEST CHEF JACKET**

**Weight** 195g/m<sup>2</sup>

**Fabric** 65% polyester, 35% cotton twill

**Description** double breasted with press studs • thermometer sleeve pocket

**Colours** BL W

HALF CHEST (CM)

SIZE	XS	S	M	L	XL	2XL	3XL	4XL	5XL
CM	47	52	57	62	67	72	77	82	87

PRICE INCLUDES EMBROIDERY. SEE **PAGE 3** FOR DETAILS.

ALT-GOR

**UNISEX GORDON CHEF PANTS**

**Weight** 195g/m<sup>2</sup>

**Fabric** 65% polyester, 35% cotton twill

**Description** elasticated waistband with drawcord and stopper • two side pockets • single back pocket

**Colours** BL

HALF WAIST (CM)

SIZE	XS	S	M	L	XL	2XL	3XL	4XL	5XL
CM	56	61	71	79	84	89	94	99	104





ALT-ZSL

## UNISEX LONG SLEEVE ZEST CHEF JACKET



**Weight** 195g/m<sup>2</sup>

**Fabric** 65% polyester, 35% cotton twill

**Description** double breasted with press studs  
• thermometer sleeve pocket

**Colours**



HALF CHEST (CM)

SIZE	XS	S	M	L	XL	2XL	3XL	4XL	5XL
CM	47	52	57	62	67	72	77	82	87



PRICE INCLUDES EMBROIDERY. SEE PAGE 3 FOR DETAILS.

A woman in a white chef's uniform and hat stands in a kitchen. She has her arms crossed and is looking towards the camera. The hat has "The Table" written on it. The kitchen background includes a white tiled wall, a stainless steel range hood, and a counter with various kitchen items like a cutting board with vegetables and a carton of eggs.

ELEVATE YOUR  
**CULINARY  
EXPERIENCE**





DOUBLE BREASTED WITH CONTRAST COLOUR COLLAR



CONTRAST INNER CUFF



THERMOMETER SLEEVE POCKET



ALT-TLN  
**UNISEX LONG SLEEVE  
TOULON CHEF JACKET**

**Weight** 195g/m<sup>2</sup>

**Fabric** 65% polyester, 35% cotton

**Description** contrast collar and inner cuff • double breasted  
• chest pocket • thermometer sleeve pocket

**Colours** W

HALF CHEST (CM)

SIZE	XS	S	M	L	XL	2XL	3XL	4XL	5XL
CM	53	56	59	62	65	68	71	74	77

PRICE INCLUDES SCREEN PRINT. SEE **PAGE 3** FOR DETAILS.



# FIT FOR AN EXECUTIVE CHEF



ALT-DIJ  
**UNISEX LONG SLEEVE  
DIJON CHEF JACKET**

**Weight** 195g/m<sup>2</sup>

**Fabric** 65% polyester, 35% cotton

**Description** contrast piping at collar, front panel and cuff • double breasted • thermometer sleeve pocket

**Colours** W

HALF CHEST (CM)

SIZE	XS	S	M	L	XL	2XL	3XL	4XL	5XL
CM	53	56	59	62	65	68	71	74	77

PRICE INCLUDES EMBROIDERY. SEE **PAGE 3** FOR DETAILS.



DOUBLE BREASTED WITH CONTRAST PIPING AT COLLAR & FRONT PANEL



CONTRAST PIPING AT CUFF



THERMOMETER SLEEVE POCKET





ALT-FHC  
**MARRIOT POLYCOTTON HOUSECOAT**

**Weight** 190g/m<sup>2</sup>

**Fabric** polycotton twill

**Description** open neck collar • 5 button closure • mitered chest pocket • two bottom pockets • bust darts • garment features top stitching and bar tacks at stress points • closed back, longer length garment

**Colours** KH N RB W

**HALF CHEST (CM)**

SIZE	S	M	L	XL	2XL	3XL	4XL
CM	51,5	55,5	59,5	63,5	67,5	71,5	75,5

PRICE INCLUDES SCREEN PRINT. SEE **PAGE 3** FOR DETAILS.





ALT-AVL  
**AVALLON CHEF BEANIE**

- Weight** 195g/m<sup>2</sup>
- Fabric** 65% polyester, 35% cotton
- Description** expandable elastic back
- Colours** BL W



EXPANDABLE ELASTIC BACK ON BOTH BLACK AND WHITE BEANIE



ALT-NMD  
**NORMANDY BANDANA**

- Weight** 195g/m<sup>2</sup>
- Fabric** 65% polyester, 35% cotton
- Description** paneled head wrap • back ties
- Colours** BL W



# CONTI SUITS

Choose from a selection of **CONTI SUITS**, designed with the latest **TECHNICAL FABRICS**, to provide your team with the **PERFORMANCE** and **PROTECTION** they need.





**NEW**

CT-AL-23-F

**BUDGET CONTI SUIT**

**Weight** 190g/m<sup>2</sup>

**Fabric** polycotton twill

**Description** **jacket:** open neck collar • front yoke panel • concealed zip  
• monza style chest pocket • two side pockets  
**pants:** elasticated back waist • five belt loops • two slanted front pockets • back pocket

**Colours** **RB**

the suit size is based on the size of the jacket

**SIZE**

<b>J*</b>	32	34	36	38	40	42	44	46	48	50	52	54	56	58
<b>P**</b>	28	30	32	34	36	38	40	42	44	46	48	50	52	54

**MEASUREMENTS**

<b>J*</b>	41	43.5	46	48.5	51	53.5	56	58.5	61	63.5	66	68.5	71	73.5
<b>P**</b>	36	38.5	41	43.5	46	48.5	51	53.5	56	58.5	61	63.5	66	68.5

\* JACKET HALF CHEST (CM)

\*\* MATCHING PANTS HALF WAIST STRETCHED (CM)





ALT-1101  
**TRADE POLYCOTTON CONTI SUIT**

**Weight** 190g/m<sup>2</sup>

**Fabric** polycotton twill

**Description** **jacket:** open neck collar • front yoke panel • concealed zip • monza style chest pocket • two side pockets • **pants:** elasticated back waist • five belt loops • two slanted front pockets • back pocket

**Colours** BL G GY KH N O R RB W

the suit size is based on the size of the jacket

**SIZE**

<b>J*</b>	32	34	36	38	40	42	44	46	48	50	52	54	56	58
<b>P**</b>	28	30	32	34	36	38	40	42	44	46	48	50	52	54

**MEASUREMENTS**

<b>J*</b>	46,5	49	51,5	54	56,5	59	61,5	64	66,5	69	71,5	74	76,5	79
<b>P**</b>	36,8	39,1	41,4	43,7	46	48,3	50,6	52,9	55,2	57,5	59,8	62,1	64,5	66,7

\* JACKET HALF CHEST (CM) \*\* MATCHING PANTS HALF WAIST STRETCHED (CM)





## TRADE POLYCOTTON REFLECTIVE CONTI SUIT

**Weight** 190g/m<sup>2</sup>

**Fabric** polycotton twill

**Description** **jacket:** open neck collar • front yoke panel • concealed zip • monza style chest pocket • two side pockets • **pants:** elasticated back waist • five belt loops • two slanted front pockets • back pocket

**Colours** BL G GY KH N O R RB W

the suit size is based on the size of the jacket

### SIZE

<b>J*</b>	32	34	36	38	40	42	44	46	48	50	52	54	56	58
<b>P**</b>	28	30	32	34	36	38	40	42	44	46	48	50	52	54

### MEASUREMENTS

<b>J*</b>	46,5	49	51,5	54	56,5	59	61,5	64	66,5	69	71,5	74	76,5	79
<b>P**</b>	36,8	39,1	41,4	43,7	46	48,3	50,6	52,9	55,2	57,5	59,8	62,1	64,5	66,7

\* JACKET HALF CHEST (CM) \*\* MATCHING PANTS HALF WAIST STRETCHED (CM)

## REFLECTIVE ARMS & LEGS - YELLOW TAPE

yellow/silver 50mm reflective tape detail on arms and legs

### PRE-TAPED AND IN STOCK\*

ALT-11010-BL ALT-11010-G ALT-11010-GY ALT-11010-KH ALT-11010-O ALT-11010-R ALT-11010-W

ALT-1105-N ALT-1105-RB



## REFLECTIVE ARMS & LEGS - ORANGE TAPE

orange/silver 50mm reflective tape detail on arms and legs

ALT-11011-BL ALT-11011-G ALT-11011-GY ALT-11011-KH ALT-11011-N ALT-11011-O ALT-11011-R ALT-11011-RB ALT-11011-W



\*Navy and royal blue Conti Suits with yellow/silver 50mm reflective tape on arms and legs in this style are available immediately, ie with no lead times associated (unless branded). Reflective tape is added to all other relevant styles in the Altitude Workwear range upon placing an order and therefore will have an associated lead time.









## TRADE POLYCOTTON REFLECTIVE CONTI SUIT

**Weight** 190g/m<sup>2</sup>

**Fabric** polycotton twill

**Description** **jacket:** open neck collar • front yoke panel • concealed zip • monza style chest pocket • two side pockets • **pants:** elasticated back waist • five belt loops • two slanted front pockets • back pocket

**Colours** BL G GY KH N O R RB W

the suit size is based on the size of the jacket

### SIZE

<b>J*</b>	32	34	36	38	40	42	44	46	48	50	52	54	56	58
<b>P**</b>	28	30	32	34	36	38	40	42	44	46	48	50	52	54

### MEASUREMENTS

<b>J*</b>	46,5	49	51,5	54	56,5	59	61,5	64	66,5	69	71,5	74	76,5	79
<b>P**</b>	36,8	39,1	41,4	43,7	46	48,3	50,6	52,9	55,2	57,5	59,8	62,1	64,5	66,7

\* JACKET HALF CHEST (CM) \*\* MATCHING PANTS HALF WAIST STRETCHED (CM)

## REFLECTIVE ARMS, LEGS & BACK - YELLOW TAPE

yellow/silver 50mm reflective tape detail on arms, legs and back

ALT-11012-BL ALT-11012-G ALT-11012-GY ALT-11012-KH ALT-11012-N ALT-11012-O ALT-11012-R ALT-11012-RB ALT-11012-W



## REFLECTIVE ARMS, LEGS & BACK - ORANGE TAPE

orange/silver 50mm reflective tape detail on arms, legs and back

ALT-11013-BL ALT-11013-G ALT-11013-GY ALT-11013-KH ALT-11013-N ALT-11013-O ALT-11013-R ALT-11013-RB ALT-11013-W









**NEW**

CT-AL-22-F



**PREMIUM POLYCOTTON CONTI SUIT**



**Weight** 190g/m<sup>2</sup>

**Fabric** polycotton twill

**Description** **jacket:** open neck collar • front yoke panel • concealed zip • chest pocket features v-flap with press stud closure and pen pocket • two side pockets • triple-needle stitching • bar tacks at stress points • YKK zips **pants:** elasticated back waist • five belt loops • two slanted front pockets • back pocket • triple-needle topstitching • bar tacks at stress points • YKK zip

**Colours**



the suit size is based on the size of the jacket

SIZE

<b>J*</b>	32	34	36	38	40	42	44	46	48	50	52	54	56	58
<b>P**</b>	28	30	32	34	36	38	40	42	44	46	48	50	52	54

MEASUREMENTS

<b>J*</b>	46.5	49	51.5	54	56.5	59	61.5	64	66.5	69	71.5	74	76.5	79
<b>P**</b>	36.8	39.1	41.4	43.7	46	48.3	50.6	52.9	55.2	57.5	59.8	62.1	64.5	66.7

\* JACKET HALF CHEST (CM) \*\* MATCHING PANTS HALF WAIST STRETCHED (CM)







ALT-1103

## TECHNICIAN 100% COTTON CONTI SUIT

**Weight** 200g/m<sup>2</sup>

**Fabric** 100% cotton twill

**Description** **jacket:** open neck collar • front yoke panel • concealed zip • monza style chest pocket • two side pockets  
**pants:** elasticated back waist • five belt loops • two slanted front pockets • back pocket

**Colours**



the suit size is based on the size of the jacket

### SIZE

<b>J*</b>	32	34	36	38	40	42	44	46	48	50	52	54	56	58
<b>P**</b>	28	30	32	34	36	38	40	42	44	46	48	50	52	54

### MEASUREMENTS

<b>J*</b>	48,5	51	53,5	56	58,5	61	63,5	66	68,5	71	73,5	76	78,5	81
<b>P**</b>	77	82	87	92	97	102	107	112	117	122	127	132	137	142

\* JACKET HALF CHEST (CM) \*\* MATCHING PANTS WAIST STRETCHED (CM)



## TECHNICIAN 100% COTTON REFLECTIVE CONTI SUIT



**Weight** 200g/m<sup>2</sup>



**Fabric** 100% cotton twill



**Description** **jacket:** open neck collar • front yoke panel • concealed zip • monza style chest pocket • two side pockets • **pants:** elasticated back waist • five belt loops • two slanted front pockets • back pocket

**Colours** N RB

the suit size is based on the size of the jacket

### SIZE

<b>J*</b>	32	34	36	38	40	42	44	46	48	50	52	54	56	58
<b>P**</b>	28	30	32	34	36	38	40	42	44	46	48	50	52	54

### MEASUREMENTS

<b>J*</b>	48,5	51	53,5	56	58,5	61	63,5	66	68,5	71	73,5	76	78,5	81
<b>P**</b>	77	82	87	92	97	102	107	112	117	122	127	132	137	142

\* JACKET HALF CHEST (CM) \*\* MATCHING PANTS WAIST STRETCHED (CM)

### REFLECTIVE ARMS & LEGS

#### YELLOW TAPE

yellow/silver 50mm reflective tape detail on arms and legs

ALT-11031-N ALT-11031-RB



#### ORANGE TAPE

orange/silver 50mm reflective tape detail on arms and legs

ALT-11032-N ALT-11032-RB



### REFLECTIVE ARMS, LEGS & BACK

#### YELLOW TAPE

yellow/silver 50mm reflective tape detail on arms, legs and back

ALT-11033-N ALT-11033-RB



#### ORANGE TAPE

orange/silver 50mm reflective tape detail on arms, legs and back

ALT-11034-N ALT-11034-RB







ALT-1104  
**VINTAGE 100% COTTON DENIM CONTI SUIT**

**Fabric** 100% cotton, 10oz denim

**Description** **jacket:** open neck collar • front yoke panel • concealed zip • monza style chest pocket • two side pockets  
**pants:** elasticated back waist • five belt loops • two slanted front pockets • back pocket

**Colours** 

the suit size is based on the size of the jacket

SIZE

J*	32	34	36	38	40	42	44	46	49	50	52	54	56	58
P**	28	30	32	34	36	38	40	42	44	46	48	50	52	54

MEASUREMENTS

J*	48,5	51	53,5	56	58,5	61	63,5	66	68,5	71	73,5	76	78,5	81
P**	77	82	87	92	97	102	107	112	117	122	127	132	137	142

\* JACKET HALF CHEST (CM) \*\* MATCHING PANTS WAIST STRETCHED (CM)





VINTAGE 100% COTTON DENIM CONTI SUIT

REFLECTIVE ARMS & LEGS



**YELLOW TAPE**

yellow/silver 50mm reflective tape detail on arms and legs

ALT-11041-DB

**ORANGE TAPE**

orange/silver 50mm reflective tape detail on arms and legs

ALT-11042-DB



REFLECTIVE ARMS, LEGS & BACK



**YELLOW TAPE**

yellow/silver 50mm reflective tape detail on arms, legs and back

ALT-11043-DB

**ORANGE TAPE**

orange/silver 50mm reflective tape detail on arms, legs and back

ALT-11044-DB





ALT-1108

**SAFETY POLYCOTTON BOILER SUIT**



**Weight** 190g/m<sup>2</sup>

**Fabric** polycotton twill

**Description** open neck collar • concealed metal shank button placket • left chest pocket • slanted front pockets • back pocket • top stitching detail • bar tacks at stress points

**Colours**  RB  W

JACKET HALF CHEST (CM)

SIZE	32	34	36	38	40	42	44	46	48	50	52	54
CM	45,4	48	50,5	53	55,5	58	60,5	63	65,5	68	70,5	73





**SAFETY POLYCOTTON BOILER SUIT**

**REFLECTIVE ARMS & LEGS**

**YELLOW TAPE**

yellow/silver 50mm reflective tape detail on arms and legs

ALT-11081-RB ALT-11081-W



**ORANGE TAPE**

orange/silver 50mm reflective tape detail on arms and legs

ALT-11082-RB ALT-11082-W



**REFLECTIVE ARMS, LEGS & BACK**

**YELLOW TAPE**

yellow/silver 50mm reflective tape detail on arms, legs and back

ALT-11083-RB ALT-11083-W



**ORANGE TAPE**

orange/silver 50mm reflective tape detail on arms, legs and back

ALT-11084-RB ALT-11084-W







ALT-1106

### ACID RESISTANT POLYCOTTON CONTI SUIT

**Weight** 190g/m<sup>2</sup>

**Fabric** acid resistant polycotton

**Description** **jacket:** open neck collar • front yoke panel • concealed zip • monza style chest pocket • two side pockets • **pants:** elasticated back waist • five belt loops • two slanted front pockets • back pocket • triple stitched back rise

**Colours** OL

the suit size is based on the size of the jacket

#### SIZE

<b>J*</b>	32	34	36	38	40	42	44	46	48	50	52	54	56	58
<b>P**</b>	28	30	32	34	36	38	40	42	44	46	48	50	52	54

#### MEASUREMENTS

<b>J*</b>	48,5	51	53,5	56	58,5	61	63,5	66	68,5	71	73,5	76	78,5	81
<b>P**</b>	77	82	87	92	97	102	107	112	117	122	127	132	137	142

\* JACKET HALF CHEST (CM) \*\* MATCHING PANTS WAIST STRETCHED (CM)



ACID RESISTANT POLYCOTTON CONTI SUIT



REFLECTIVE ARMS & LEGS

**YELLOW TAPE**

yellow/silver 50mm reflective tape detail on arms and legs

ALT-11061-OL

**ORANGE TAPE**

orange/silver 50mm reflective tape detail on arms and legs

ALT-11062-OL



REFLECTIVE ARMS, LEGS & BACK

**YELLOW TAPE**

yellow/silver 50mm reflective tape detail on arms, legs and back

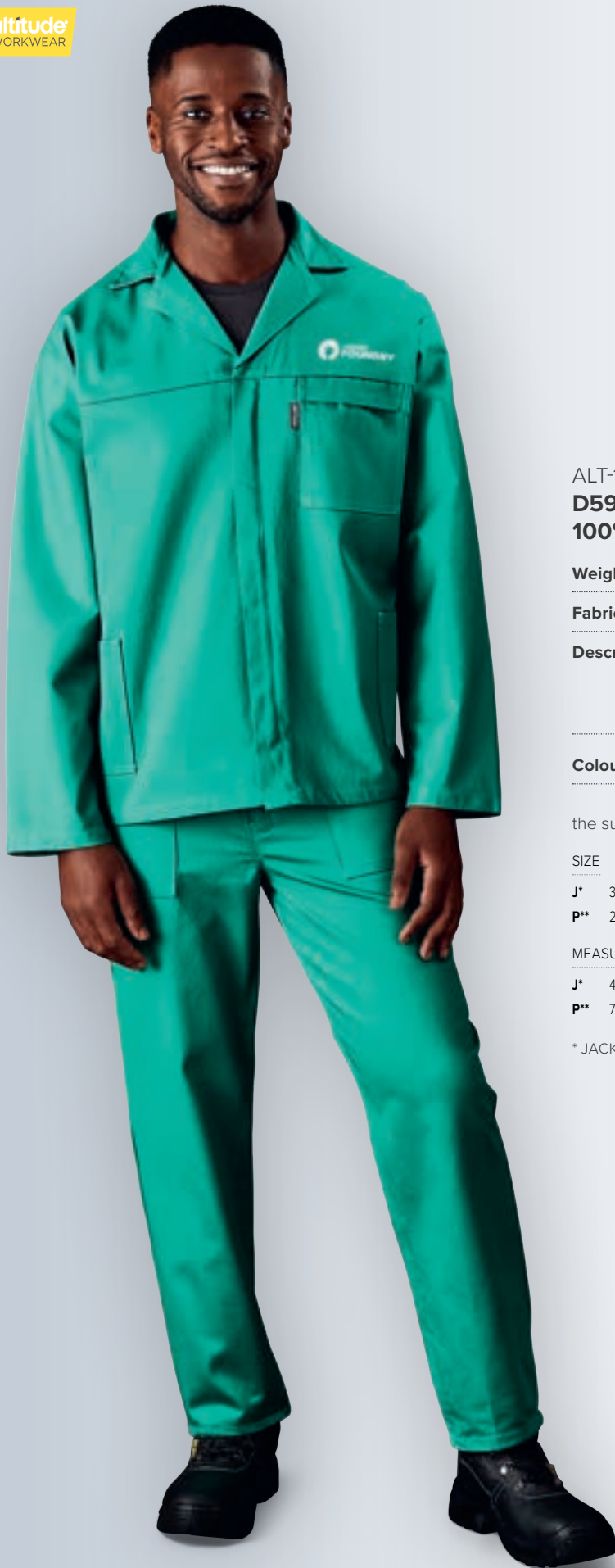
ALT-11063-OL

**ORANGE TAPE**

orange/silver 50mm reflective tape detail on arms, legs and back

ALT-11064-OL





ALT-1120  
**D59 FLAME RETARDANT  
100% COTTON CONTI SUIT**

**Weight** 200g/m<sup>2</sup>

**Fabric** 100% D59 flame retardant cotton twill

**Description** **jacket:** open neck collar • front yoke panel • concealed zip • monza style chest pocket • two side pockets  
**pants:** elasticated back waist • five belt loops • two slanted front pockets • back pocket

**Colours** G

the suit size is based on the size of the jacket

SIZE

<b>J*</b>	32	34	36	38	40	42	44	46	48	50	52	54	56	58
<b>P**</b>	28	30	32	34	36	38	40	42	44	46	48	50	52	54

MEASUREMENTS

<b>J*</b>	48,5	51	53,5	56	58,5	61	63,5	66	68,5	71	73,5	76	78,5	81
<b>P**</b>	77	82	87	92	97	102	107	112	117	122	127	132	137	142

\* JACKET HALF CHEST (CM) \*\* MATCHING PANTS WAIST STRETCHED (CM)









**WORK JACKETS**

**& PANTS**





With the option to mix and match our comprehensive selection of **WORK JACKETS AND PANTS**, you have the freedom to create a unique uniform or workwear solution that fits your needs. No matter the industry, our **PREMIUM SELECTION** offers **COMFORT, VERSATILITY AND QUALITY**.



## SOLID COLOUR JACKET

ALT-1111-N

ALT-1111-RB



N



RB

## TWO-TONE JACKET

front and back contrast yoke

ALT-1112-GY

ALT-1112-KH



GY



KH



## SITE PREMIUM POLYCOTTON JACKET



**Weight** 235g/m<sup>2</sup>



**Fabric** 65% polyester, 35% cotton twill



**Description** open neck collar • front yoke panel  
• concealed zip • chest pocket features V-flap with press stud closure and pen pocket • two side pockets • triple needle top stitching • bar tacks at stress points

### HALF CHEST (CM)

SIZE	S	M	L	XL	2XL	3XL	4XL	5XL
CM	52,2	57	61,8	66,6	71,4	77,2	82	86,8





ALT-1113

**SITE PREMIUM POLYCOTTON PANTS**



**Weight** 235g/m<sup>2</sup>



**Fabric** 65% polyester, 35% cotton twill



**Description** elasticated back waist • five belt loops • two slanted front pockets • back pocket • triple needle top stitching • bar tacks at stress points

**Colours** N OL RB

**WAIST STRETCHED (CM)**

SIZE	28	30	32	34	36	38	40	42	44	46	48	50	52
CM	87	92	97	102	107	112	117	122	127	132	137	142	147



**REFLECTIVE ARMS**

**YELLOW TAPE**

yellow/silver 50mm reflective tape detail on arms

ALT-11111-N

ALT-11111-RB



**ORANGE TAPE**

orange/silver 50mm reflective tape detail on arms

ALT-11112-N

ALT-11112-RB



**REFLECTIVE ARMS & BACK**

**YELLOW TAPE**

yellow/silver 50mm reflective tape detail on arms and back

ALT-11113-N

ALT-11113-RB



**ORANGE TAPE**

orange/silver 50mm reflective tape detail on arms and back

ALT-11114-N

ALT-11114-RB



**SITE PREMIUM POLYCOTTON REFLECTIVE JACKET**



**Weight** 235g/m<sup>2</sup>

**Fabric** 65% polyester, 35% cotton twill

**Description** open neck collar • front yoke panel • concealed zip  
• chest pocket features V-flap with press stud closure and pen pocket • two side pockets • triple needle top stitching • bar tacks at stress points

**Colours** N RB

HALF CHEST (CM)

SIZE	S	M	L	XL	2XL	3XL	4XL	5XL
CM	52,2	57	61,8	66,6	71,4	77,2	82	86,8





## SITE PREMIUM POLYCOTTON REFLECTIVE PANTS

**Weight** 235g/m<sup>2</sup>

**Fabric** 65% polyester, 35% cotton twill

**Description** elasticated back waist • five belt loops • two slanted front pockets • back pocket • triple needle top stitching • bar tacks at stress points

**Colours** N OL RB

WAIST STRETCHED (CM)

SIZE	28	30	32	34	36	38	40	42	44	46	48	50	52
CM	87	92	97	102	107	112	117	122	127	132	137	142	147

### REFLECTIVE LEGS - YELLOW TAPE

yellow/silver 50mm reflective tape detail on legs

ALT-11131-N

ALT-11131-OL

ALT-11131-RB



### REFLECTIVE LEGS - ORANGE TAPE

orange/silver 50mm reflective tape detail on legs

ALT-11132-N

ALT-11132-OL

ALT-11132-RB





## REFLECTIVE ARMS

### YELLOW TAPE

yellow/silver 50mm reflective tape detail on arms

ALT-11121-GY

ALT-11121-KH



### ORANGE TAPE

orange/silver 50mm reflective tape detail on arms

ALT-11122-GY

ALT-11122-KH



## REFLECTIVE ARMS & BACK

### YELLOW TAPE

yellow/silver 50mm reflective tape detail on arms and back

ALT-11123-GY

ALT-11123-KH



### ORANGE TAPE

orange/silver 50mm reflective tape detail on arms and back

ALT-11124-GY

ALT-11124-KH



## SITE PREMIUM TWO-TONE POLYCOTTON REFLECTIVE JACKET



**Weight** 235g/m<sup>2</sup>



**Fabric** 65% polyester, 35% cotton twill



**Description** front and back contrast yoke • open neck collar • front yoke panel • concealed zip • chest pocket features V-flap with press stud closure and pen pocket • two side pockets • triple needle top stitching • bar tacks at stress points



**Colours** GY KH

HALF CHEST (CM)

SIZE	S	M	L	XL	2XL	3XL	4XL	5XL
CM	52,2	57	61,8	66,6	71,4	77,2	82	86,8





## SITE PREMIUM POLYCOTTON REFLECTIVE PANTS

**Weight** 235g/m<sup>2</sup>

**Fabric** 65% polyester, 35% cotton twill

**Description** elasticated back waist • five belt loops • two slanted front pockets • back pocket • triple needle top stitching • bar tacks at stress points

**Colours** N OL RB

WAIST STRETCHED (CM)

SIZE	28	30	32	34	36	38	40	42	44	46	48	50	52
CM	87	92	97	102	107	112	117	122	127	132	137	142	147

### REFLECTIVE LEGS - YELLOW TAPE

yellow/silver 50mm reflective tape detail on legs

ALT-11131-N

ALT-11131-OL

ALT-11131-RB



### REFLECTIVE LEGS - ORANGE TAPE

orange/silver 50mm reflective tape detail on legs

ALT-11132-N

ALT-11132-OL

ALT-11132-RB









PRESS STUD POCKET  
CLOSURE & PEN POCKET  
ON ORANGE & YELLOW  
JACKETS



ALT-1109  
**TRAFFIC PREMIUM TWO-TONE HI-VIZ  
REFLECTIVE JACKET**

**Weight** 235g/m<sup>2</sup>

**Fabric** 65% polyester, 35% cotton twill • **contrast panels:**  
50% cotton, 50% polyester interwoven fabric

**Description** front and back contrast panels • open neck collar  
• front yoke panel • concealed YKK zip with single  
press stud • chest pocket features V-flap with press  
stud closure and pen pocket • two front pockets  
• silver 50mm reflective tape detail • triple needle  
top stitching • bar tacks at stress points

**Colours** O Y

HALF CHEST (CM)

SIZE	S	M	L	XL	2XL	3XL	4XL	5XL
CM	52,2	57	61,8	66,6	71,4	77,2	82	86,8

ALT-1110  
**TRAFFIC PREMIUM TWO-TONE HI-VIZ  
REFLECTIVE PANTS**

**Weight** 235g/m<sup>2</sup>

**Fabric** 65% polyester, 35% cotton twill • **contrast panels:**  
50% cotton, 50% polyester interwoven fabric

**Description** contrast panels at mid leg • elasticated back waist  
• five belt loops • concealed YKK zip • two slanted  
front pockets • back pocket • silver 50mm reflective  
tape detail • triple needle top stitching • bar tacks at  
stress points

**Colours** O Y

WAIST STRETCHED (CM)

SIZE	28	30	32	34	36	38	40	42	44	46	48	50	52
CM	90	95	100	105	110	115	120	125	130	135	140	145	150







ALT-1114  
**ARTISAN PREMIUM 100% COTTON JACKET**



**Weight** 200g/m<sup>2</sup>



**Fabric** 100% cotton twill



**Description** open neck collar • front yoke panel • concealed zip  
• chest pocket features V-flap with press stud closure and pen pocket • two side pockets • triple needle top stitching • bar tacks at stress points

**Colours**



HALF CHEST (CM)

SIZE	S	M	L	XL	2XL	3XL	4XL	5XL
CM	52,2	57	61,8	66,6	71,4	77,2	82	86,8

ALT-1115  
**ARTISAN PREMIUM 100% COTTON PANTS**

**Weight** 200g/m<sup>2</sup>

**Fabric** 100% cotton twill

**Description** elasticated back waist • five belt loops  
• two slanted front pockets • back pocket  
• triple needle top stitching • bar tacks at stress points

**Colours**



WAIST STRETCHED (CM)

SIZE	28	30	32	34	36	38	40	42	44	46	48	50	52
CM	87	92	97	102	107	112	117	122	127	132	137	142	147





## ARTISAN PREMIUM 100% COTTON REFLECTIVE JACKET

**Weight** 200g/m<sup>2</sup>

**Fabric** 100% cotton twill

**Description** open neck collar • front yoke panel • concealed zip  
• chest pocket features V-flap with press stud closure and pen pocket • two side pockets • triple needle top stitching • bar tacks at stress points

**Colours** N RB

HALF CHEST (CM)

SIZE	S	M	L	XL	2XL	3XL	4XL	5XL
CM	52,2	57	61,8	66,6	71,4	77,2	82	86,8

## REFLECTIVE ARMS

### YELLOW TAPE

yellow/silver 50mm reflective tape detail on arms

ALT-11141-N

ALT-11141-RB



### ORANGE TAPE

orange/silver 50mm reflective tape detail on arms

ALT-11142-N

ALT-11142-RB



## REFLECTIVE ARMS & BACK

### YELLOW TAPE

yellow/silver 50mm reflective tape detail on arms and back

ALT-11143-N

ALT-11143-RB



### ORANGE TAPE

orange/silver 50mm reflective tape detail on arms and back

ALT-11144-N

ALT-11144-RB







## ARTISAN PREMIUM 100% COTTON REFLECTIVE PANTS

<b>Weight</b>	200g/m <sup>2</sup>
<b>Fabric</b>	100% cotton twill
<b>Description</b>	elasticated back waist • five belt loops • two slanted front pockets • back pocket • triple needle top stitching • bar tacks at stress points
<b>Colours</b>	<span>N</span> <span>RB</span>

### WAIST STRETCHED (CM)

SIZE	28	30	32	34	36	38	40	42	44	46	48	50	52
CM	87	92	97	102	107	112	117	122	127	132	137	142	147

### REFLECTIVE LEGS

#### YELLOW TAPE

yellow/silver 50mm reflective tape detail on legs

ALT-11151-N

ALT-11151-RB

#### ORANGE TAPE

orange/silver 50mm reflective tape detail on legs

ALT-11152-N

ALT-11152-RB





**D59**  
**FLAME RETARDANT**  
**& ACID RESISTANT**  
**SABS APPROVED**



**SABS**  
flame retardant  
acid resistant





ALT-1118

## SABS FLAME RETARDANT & ACID RESISTANT REFLECTIVE JACKET



**Weight** 300g/m<sup>2</sup>



**Fabric** 100% D59 flame retardant and acid resistant cotton twill



**Description** open neck collar • front yoke panel • concealed zip • chest pocket features V-flap with concealed press stud closure • two front pockets • elasticated cuffs • triple needle top stitching • bar tacks at stress points • silver 50mm flame retardant reflective tape detail • SABS approved



**Colours**

N

CHEST (CM)

SIZE	32	34	36	38	40	42	44	46	48	50	52	54	56
CM	99	104	109	114	119	124	129	134	139	144	149	154	159



FLAME RETARDANT & ACID RESISTANT LOGO EMBROIDERED ON THE GARMENT



SABS WATERMARK ON THE REVERSE SIDE OF THE FABRIC



ALT-1119

## SABS FLAME RETARDANT & ACID RESISTANT REFLECTIVE PANTS



**Weight** 300g/m<sup>2</sup>



**Fabric** 100% D59 flame retardant and acid resistant cotton twill



**Description** elasticated back waist • five belt loops • two slanted front pockets • back pocket • right leg features ruler pocket • silver 50mm flame retardant reflective tape detail • triple needle top stitching • bar tacks at stress points • SABS approved



**Colours**

N

WAIST STRETCHED (CM)

SIZE	28	30	32	34	36	38	40	42	44	46	48	50	52	54
CM	75	80	85	90	95	100	105	110	115	120	125	130	135	140



  
GRINDER WORKS





PRESS STUD POCKET  
CLOSURE, PEN POCKET &  
CONTRAST STITCHING



ALT-1116  
**CAST PREMIUM 100% COTTON DENIM JACKET**

**Fabric** 100% cotton, 12oz denim

**Description** open neck collar • front yoke panel • concealed zip  
• chest pocket features square flap with press stud  
closure and pen pocket • two front pockets  
• contrast triple needle top stitching • bar tacks at  
stress points

**Colours** BU

HALF CHEST (CM)

SIZE	S	M	L	XL	2XL	3XL	4XL	5XL
CM	44	49	54	59	64	69	74	79

ALT-1117  
**CAST PREMIUM 100% COTTON DENIM PANTS**

**Fabric** 100% cotton, 12oz denim

**Description** elasticated back waist • five belt loops • two slanted  
front pockets • back pocket • contrast triple needle  
top stitching • bar tacks at stress points

**Colours** BU

HALF WAIST STRETCHED (CM)

SIZE	28	30	32	34	36	38	40	42	44	46	48	50	52
CM	36,8	39,1	41,4	43,7	46	48,3	50,6	52,9	55,2	57,5	59,8	62,1	64,5



## CAST PREMIUM 100% COTTON DENIM REFLECTIVE JACKET

**Fabric** 100% cotton, 12oz denim

**Description** open neck collar • front yoke panel • concealed zip • chest pocket features square flap with press stud closure and pen pocket • two front pockets • contrast triple needle top stitching • bar tacks at stress points

**Colours** BU

HALF CHEST (CM)

SIZE	S	M	L	XL	2XL	3XL	4XL	5XL
CM	44	49	54	59	64	69	74	79

### REFLECTIVE ARMS

#### YELLOW TAPE

yellow/silver 50mm reflective tape detail on arms

ALT-11161-BU

#### ORANGE TAPE

orange/silver 50mm reflective tape detail on arms

ALT-11162-BU



### REFLECTIVE ARMS & BACK

#### YELLOW TAPE

yellow/silver 50mm reflective tape detail on arms and back

ALT-11163-BU

#### ORANGE TAPE

orange/silver 50mm reflective tape detail on arms and back

ALT-11164-BU







## CAST PREMIUM 100% COTTON DENIM REFLECTIVE PANTS

**Fabric** 100% cotton, 12oz denim

**Description** elasticated back waist • five belt loops • two slanted front pockets • back pocket • contrast triple needle top stitching • bar tacks at stress points

**Colours** BU

HALF WAIST STRETCHED (CM)

SIZE	28	30	32	34	36	38	40	42	44	46	48	50	52
CM	36,8	39,1	41,4	43,7	46	48,3	50,6	52,9	55,2	57,5	59,8	62,1	64,5

### REFLECTIVE LEGS

#### YELLOW TAPE

yellow/silver 50mm reflective tape detail on legs

ALT-11171-BU

#### ORANGE TAPE

orange/silver 50mm reflective tape detail on legs

ALT-11172-BU





BAS-7774  
**MENS SIERRA JEANS**

**Fabric** 100% cotton, 11oz denim

**Description** five pocket jean with rivets for extra durability  
• YKK zip • contrast stitching

**Colours** N

**HALF WAIST (CM)**

SIZE	28	30	32	34	36	38	40	42	44	46	48
CM	36	38.5	41	43.5	46	48.5	51	53.5	56	58.5	61







BAS-7775

## LADIES SIERRA JEANS



**Fabric** 97% cotton, 3% spandex, 9.5oz

**Description** two curved front pockets with money pocket and rivets for durability • two back pockets with stitching detail • YKK zip • contrast stitching

**Colours**

N

HALF WAIST (CM)

SIZE	28	30	32	34	36	38	40	42	44	46
CM	31.5	34	36.5	39	41.5	44	46.5	49	51.5	54





ALT-1102  
**TRADE POLYCOTTON PANTS**

**Weight** 190g/m<sup>2</sup>

**Fabric** polycotton twill

**Description** elasticated back waist • five belt loops • two slanted front pockets • back pocket

**Colours** BL N RB

HALF WAIST STRETCHED (CM)

SIZE	28	30	32	34	36	38	40	42	44	46	48	50	52
CM	36,8	39,1	41,4	43,7	46	48,3	50,6	52,9	55,2	57,5	59,8	62,1	64,5

ALT-1102-BL

ALT-1102-N

ALT-1102-RB







**REFLECTIVE LEGS - YELLOW TAPE**

yellow/silver 50mm reflective tape detail on legs

ALT-11021-BL

ALT-11021-N

ALT-11021-RB



**REFLECTIVE LEGS - ORANGE TAPE**

orange/silver 50mm reflective tape detail on legs

ALT-11022-BL

ALT-11022-N

ALT-11022-RB





ALT-1121  
**SUPERVISOR PREMIUM CARGO  
REFLECTIVE PANTS**

**Weight** 240g/m<sup>2</sup>

**Fabric** 100% J54 cotton twill

**Description** YKK zip • self-fabric waist with seven belt loops • cargo pockets with velcro closure flap • side entry front pockets • back pockets with velcro closure flap • back darts • silver 50mm reflective tape detail • top stitching detail • bar tacks at stress points

**Colours** N

**WAIST (CM)**

SIZE	28	30	32	34	36	38	40	42	44	46	48	50	52
CM	72	77	82	87	92	97	102	107	112	117	122	127	132













ALT-HLD  
MENS HIGHLANDS CARGO SHORTS

**Weight** 245g/m<sup>2</sup>

**Fabric** 65% polyester, 35% cotton, brushed twill

**Description** slanted side pockets • billow cargo side pockets  
• two back pockets with button down flap

**Colours** BL KH ST

HALF WAIST (CM) STANDARD FIT

SIZE	28	30	32	34	36	38	40	42	44	46
CM	37	39.5	42	44.5	47	49.5	52	54.5	57	59.5









**ALT-ZIP  
MENS CARGO ZIP-OFF PANTS**

**Weight** 245g/m<sup>2</sup>

---

**Fabric** 65% polyester, 35% cotton, sanded twill

---

**Description** cargo pockets • side entry pockets • back pockets with button down flap • buttons on all pockets are concealed • half leg bermuda zip-off • inner drawstring

---

**Colours** BL BN KH ST

---

**HALF WAIST (CM)**

SIZE	30	32	34	36	38	40	42	44
CM	39.5	42	44.5	47	49.5	52	54.5	57



ALT-GCG IS AVAILABLE IN THESE 3 COLOURS SHOWN



ALT-GCG  
MENS CARGO PANTS

**Weight** 245g/m<sup>2</sup>  
**Fabric** 65% polyester, 35% cotton, sanded twill

**Description** side cargo pockets • back pockets with button down flap • slanted side pockets • self-fabric belt loops • back darts

**Colours** BL NT ST

HALF WAIST (CM)

SIZE	30	32	34	36	38	40	42	44
CM	39.5	42	44.5	47	49.5	52	54.5	57







**NEW**

BO-UB-29-A

## LADIES SASHA STRETCH PANTS

**Weight** 230g/m<sup>2</sup>

**Fabric** 65% cotton, 33% polyester, 2% spandex

**Description** mock front pockets • elasticated waist • back pockets • tapered legs

**Colours**



HALF WAIST (CM)

SIZE	XS	S	M	L	XL	2XL	3XL	4XL	5XL
CM	35	37.5	40	42.5	45.5	48.5	51.5	54.5	57.5









ALT-CHI  
MENS CHINO PANTS

**Weight** 245g/m<sup>2</sup>

---

**Fabric** 65% polyester, 35% cotton, sanded twill

---

**Description** flat front • side pockets  
• button down jet  
back pocket

---

**Colours** BL KH N ST

---

HALF WAIST (CM)

SIZE	30	32	34	36	38	40	42	44
CM	39.5	42	44.5	47	49.5	52	54.5	57





ALT-1107  
**PRIME POLYCOTTON DUSTCOAT**

**Weight** 190g/m<sup>2</sup>

**Fabric** polycotton twill

**Description** open neck collar • 4 button closure • angled chest pocket • two slanted bottom pockets • back panel features center seam and slit opening at bottom • garment features top stitching detail and bar tacks at stress points

**Colours** BL GY RB W

HALF CHEST (CM)

SIZE	S	M	L	XL	2XL	3XL	4XL	5XL
CM	50	55	60	65	70	75	80	85







ALT-FHC  
**MARRIOT POLYCOTTON HOUSECOAT**

**Weight** 190g/m<sup>2</sup>

**Fabric** polycotton twill

**Description** open neck collar • 5 button closure • mitered chest pocket • two bottom pockets • bust darts • garment features top stitching and bar tacks at stress points • closed back, longer length garment

**Colours** KH N RB W

HALF CHEST (CM)

SIZE	S	M	L	XL	2XL	3XL	4XL
CM	51,5	55,5	59,5	63,5	67,5	71,5	75,5



PRICE INCLUDES SCREEN PRINT. SEE PAGE 3 FOR DETAILS.



**NEW**

FW-AL-2-F



**ELEMENT FOOD SAFETY JACKET**

**Weight** 190g/m<sup>2</sup>

**Fabric** polycotton twill

**Description** concealed placket with press studs • concealed inner chest pocket • elasticated cuffs

**Colours** W

HALF CHEST (CM)

SIZE	S	M	L	XL	2XL	3XL	4XL	5XL
CM	44	49	54	59	64	69	74	79

PRICE INCLUDES EMBROIDERY. SEE **PAGE 3** FOR DETAILS.

COVER YOUR BASES BY PAIRING OUR ELEMENT FOOD SAFETY JACKET OR COAT WITH OUR ELEMENT FOOD SAFETY PANTS.



**NEW**

FW-AL-3-F



**ELEMENT FOOD SAFETY PANTS**



**Weight** 190g/m<sup>2</sup>

**Fabric** polycotton twill

**Description** wide belt loops • back pocket with flap • elasticated waist • YKK zip

**Colours** W

WAIST (CM)

SIZE	28	30	32	34	36	38	40	42	44	46	48	50	52
CM	36.8	39.1	41.4	43.7	46	48.3	50.6	52.9	55.2	57.5	58.8	62.1	64.5





**NEW**

FW-AL-1-F



**ELEMENT FOOD SAFETY COAT**



**Weight** 190g/m<sup>2</sup>

**Fabric** polycotton twill

**Description** concealed placket with press studs • concealed inner chest pocket • elasticated cuffs

**Colours**  RB  W

HALF CHEST (CM)

SIZE	S	M	L	XL	2XL	3XL	4XL	5XL
CM	45	50	55	60	65	70	75	80

PRICE INCLUDES EMBROIDERY. SEE PAGE 3 FOR DETAILS.



# FOOTWEAR

Our **FOOTWEAR** is engineered to meet the **HIGHEST QUALITY STANDARDS** and ensure that every step you take is backed by **COMFORT, SAFETY** and **RELIABILITY**.





ALT-1905

**CRAFTSMAN CHELSEA BOOT STEEL TOE CAP**



**Material** genuine split leather upper • **sole:** dual density PU



**Description** CE EN ISO 20345 approved • steel toe cap with impact protection of 200 joules • easy pull-on webbed loop • elasticated sides • heat resistant to 90 degrees celsius • oil resistant • acid resistant • slip resistant • shock absorption heel • wider fit for added comfort



**Colours** **BL** **BN**

**UK Size** 3 - 13



EASY PULL-ON WEBBED LOOP





ALT-1904

**MEGA SAFETY BOOT STEEL TOE CAP**

**Material** genuine split leather upper  
• **sole:** dual density PU

**Description** CE EN ISO 20345 approved • steel toe cap with impact protection of 200 joules  
• lightweight and flexible • heat resistant to 90 degrees celsius • oil resistant • acid resistant • slip resistant • shock absorption heel • removable inner soles • wider fit for added comfort

**Colours** **BL**

**UK Size** 3 - 13



ALT-1903

**MEGA SAFETY SHOE STEEL TOE CAP**

**Material** genuine split leather upper • **sole:** dual density PU

**Description** CE EN ISO 20345 approved • steel toe cap with impact protection of 200 joules  
• lightweight and flexible • heat resistant to 90 degrees celsius • oil resistant • acid resistant • slip resistant • shock absorption heel • removable inner soles • wider fit for added comfort

**Colours** **BL**

**UK Size** 3 - 13





**NEW**

FT-AL-7-F

**FORCE COMBAT BOOT**

**Fabric**      **upper:** breathable canvas  
                  • **sole:** polyurethane

**Description**    lace-up • non steel toe cap

**Colours**        **BL**

**UK Size**        4 - 13



**NEW**

FT-AL-8-F

**TRACE UTILITY SOCKS**

**Fabric**            53% polyester, 29% viscose,  
                          16% polyamide, 2% elastane

**Description**    padded sole

**Colours**         **BL**

**Size**              S & L



ALT-1901

### SHIELD GUMBOOT NON-STEEL TOE CAP

**Material** PVC

**Description** non-steel toe cap • oil resistant • acid resistant • slip resistant • CE Certified

**Colours** ● BL

**UK Size** 4 - 13







ALT-1902  
**POWER GUMBOOT STEEL TOE CAP**



**Material** PVC

**Description** steel toe cap with impact protection of 200 joules • heat resistant to 90 degrees celsius • oil resistant • acid resistant • slip resistant • CE Certified

**Colours** **BL**

**UK Size** 4 - 13



ALT-1900  
**HYGIENE GUMBOOT NON-STEEL TOE CAP**

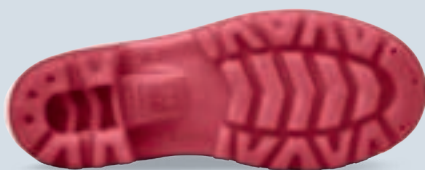


**Material** PVC / Nitrile combination upper and sole

**Description** non-steel toe cap • slip resistant • blood and fat resistant • acid resistant • CE Certified

**Colours** **W**

**UK Size** 4 - 13





ALT-TRD  
**UNISEX TRENDI CANVAS SNEAKER**

**Material** 80% cotton, 20% polyester canvas

**Description** canvas sneaker with rubber sole and toecap • twin-needle stitching • cotton laces and lining • padded insoles • metallic eyelets

**Colours** BL BU N R W

**UK Size** 2 - 13



ALT-TRD & ALT-RTR  
BOTH HAVE OPTIONS  
AVAILABLE IN BLUE  
(DENIM) & NAVY

BLUE (DENIM)

NAVY

ALT-RTR  
**UNISEX RETRO HIGH TOP CANVAS SNEAKER**

**Material** 80% cotton, 20% polyester canvas

**Description** high top canvas sneaker with rubber sole and toecap • twin-needle stitching • cotton laces and lining • padded insoles • metallic eyelets

**Colours** BL BU N R W

**UK Size** 2 - 13







**NEW**  
FO-AL-3-A  
**UNISEX COMFORT SLIP-ON SNEAKER**

<b>Fabric</b>	100% polyester
<b>Description</b>	knitted slip-on sneaker • padded insoles • contrast heel tab
<b>Colours</b>	BL
<b>UK Size</b>	2 - 13





**HI-VIZ** HI-VIZ





Discover our exclusive range of **HIGH-QUALITY REFLECTIVE VESTS, T-SHIRTS, JACKETS, BOTTOMS,** and **HEADWEAR**, crafted using top-of-the-line high visibility fabrics. These fabrics are designed to **ENHANCE VISIBILITY** in low light conditions during the day and at night, ensuring **MAXIMUM SAFETY** and **PROTECTION**.



ALT-2000  
**SIGNAL HI-VIZ REFLECTIVE CAP**

**Fabric** 100% polyester



**Description** 6 panel structured peak • 6 rows of stitching • 6 embroidered contrast eyelets • silver reflective binding detail • self-fabric velcro closure



**Colours** Y O



ALT-2001  
**ROADSIDE HI-VIZ REFLECTIVE HAT**

**Fabric** 100% polyester



**Description** unstructured • contrast cord with adjustable toggle • silver reflective binding detail



**Colours** Y O







ALT-2002  
**BEACON HI-VIZ BEANIE**

**Fabric** 100% acrylic

**Description** acrylic rib knit

**Colours** Y O



ALT-2003  
**YIELD HI-VIZ REFLECTIVE BANDANA**

**Fabric** 100% polyester

**Description** silver reflective heat-pressed tape detail

**Colours** Y O





ALT-1201  
**DIRECTION EN4 HI-VIZ REFLECTIVE FULL ZIP VEST**



**Weight** 120g/m<sup>2</sup>



**Fabric** 100% polyester tricot

**Description** full zip • contrast binding detail • silver 50mm reflective tape detail • ID pouch on left chest • EN4 certified

**Colours**



CHEST (CM)

SIZE	S	M	L	XL	2XL	3XL	4XL	5XL
CM	107	115,5	124	132,5	141	149	157	165



100% POLYESTER TRICOT





ALT-1200

**GUARD BASIC HI-VIZ REFLECTIVE BIB**



**Weight** 100g/m<sup>2</sup>



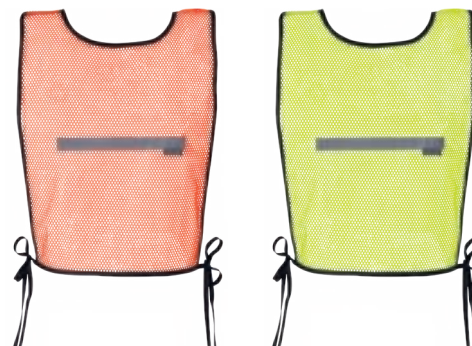
**Fabric** 100% polyester airtex mesh

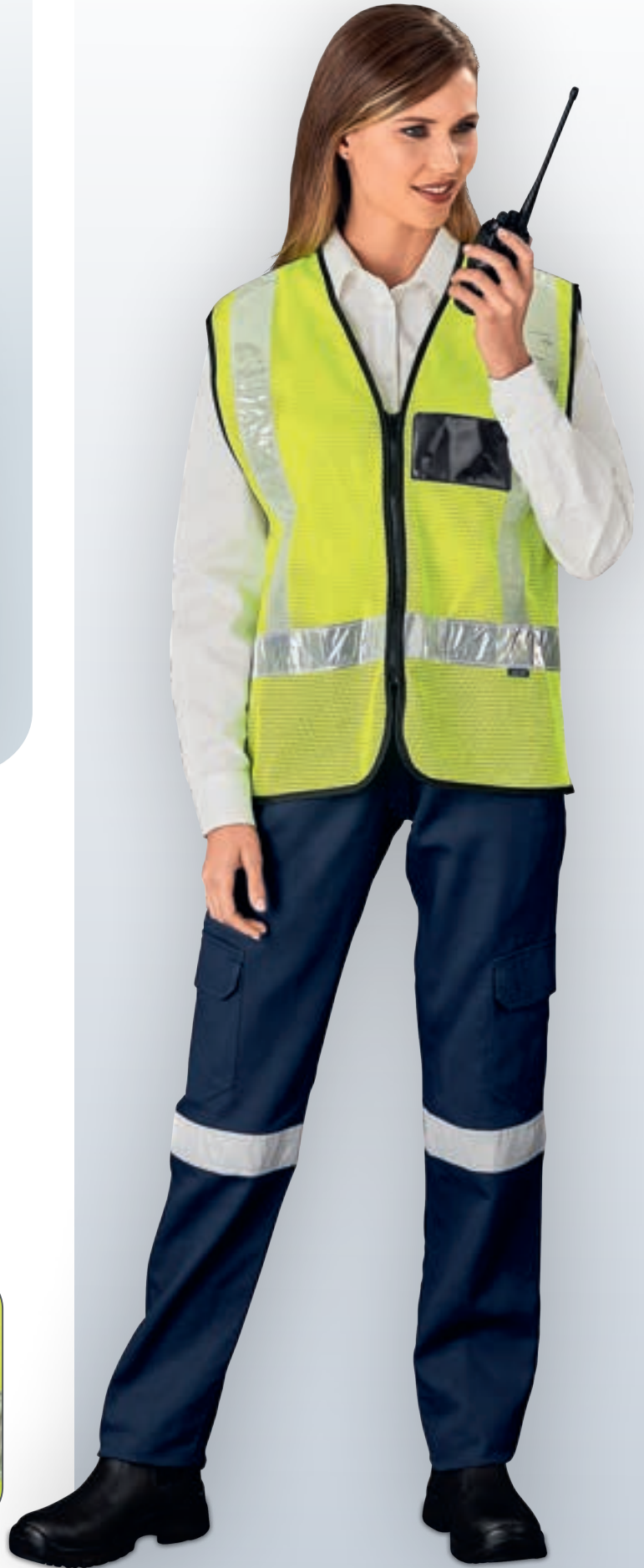


**Description** contrast binding detail • adjustable ties  
• silver 20mm reflective tape detail

**Colours** ○ ○

**Width:** 32cm **Height:** 37cm **Length:** 92cm





ALT-1202

**AIRPORT HI-VIZ  
REFLECTIVE FULL ZIP VEST**



**Weight** 120g/m<sup>2</sup>

**Fabric** 100% polyester airtex mesh

**Description** full zip • contrast binding detail • white  
50mm PVC prismatic reflective tape detail  
• ID pouch on left chest

**Colours** Y

CHEST (CM)

SIZE	S	M	L	XL	2XL	3XL	4XL	5XL
CM	107	115,5	124	132,5	141	149	157	165

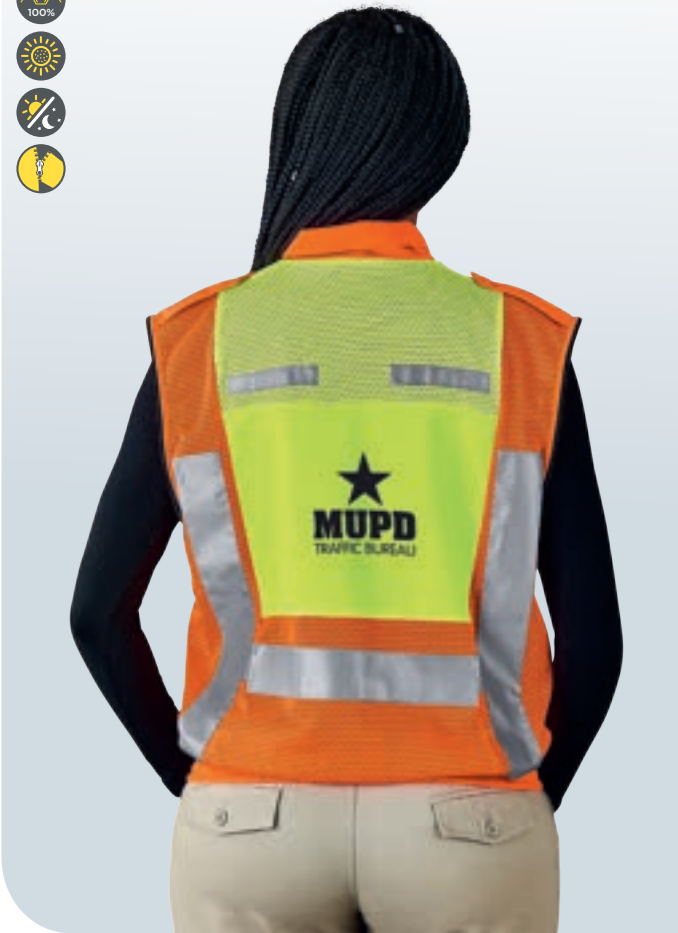


100% POLYESTER  
AIRTEX MESH



WHITE 50MM PVC  
PRISMATIC REFLECTIVE  
TAPE DETAIL





ALT-1703

## METRO TWO-TONE HI-VIZ REFLECTIVE ZIP-OFF JACKET

**Weight** 150g/m<sup>2</sup>

**Fabric** 100% polyester tricot with airtex mesh

**Description** lightweight mixed fabric jacket • zip-off sleeves • contrast full zip • ID pouch on left chest • elasticated cuffs • elasticated waistband with front press stud closure • shoulder epaulettes with press studs • silver 50mm reflective tape detail

**Colours**



CHEST (CM)

SIZE	S	M	L	XL	2XL	3XL	4XL	5XL
CM	111,2	118,8	126,5	134,2	141,8	149,5	157	164



MIXED FABRIC



ZIP-OFF SLEEVES

PRICE INCLUDES SCREEN PRINT. SEE PAGE 3 FOR DETAILS.



ALT-1300  
**ZONE HI-VIZ T-SHIRT**

**Weight** 160g/m<sup>2</sup>

**Fabric** 100% polyester birdseye

**Description** short sleeve • self-fabric crew neck

**Colours** L O Y

HALF CHEST (CM)

SIZE	S	M	L	XL	2XL	3XL	4XL	5XL
CM	50	53	56	59	62	65	68	71







ALT-1301  
**CONSTRUCTION HI-VIZ REFLECTIVE T-SHIRT**

**Weight** 160g/m<sup>2</sup>

**Fabric** 100% polyester birdseye

**Description** short sleeve • self-fabric crew neck • silver 50mm reflective heat-pressed tape detail

**Colours** L O Y

HALF CHEST (CM)

SIZE	S	M	L	XL	2XL	3XL	4XL	5XL
CM	50	53	56	59	62	65	68	71

PAIR THE CONSTRUCTION HI-VIZ REFLECTIVE T-SHIRT (ALT-1301) WITH THE SUPERVISOR PREMIUM CARGO REFLECTIVE PANTS (ALT-1121) FOR A COMPLETE LOOK. SEE PAGE W 64 FOR ALT-1121.



PRICE INCLUDES SCREEN PRINT. SEE PAGE 3 FOR DETAILS.



ALT-1400  
**SECTOR HI-VIZ GOLF SHIRT**

**Weight** 160g/m<sup>2</sup>

**Fabric** 100% polyester birdseye

**Description** knitted collar • three button placket

**Colours**

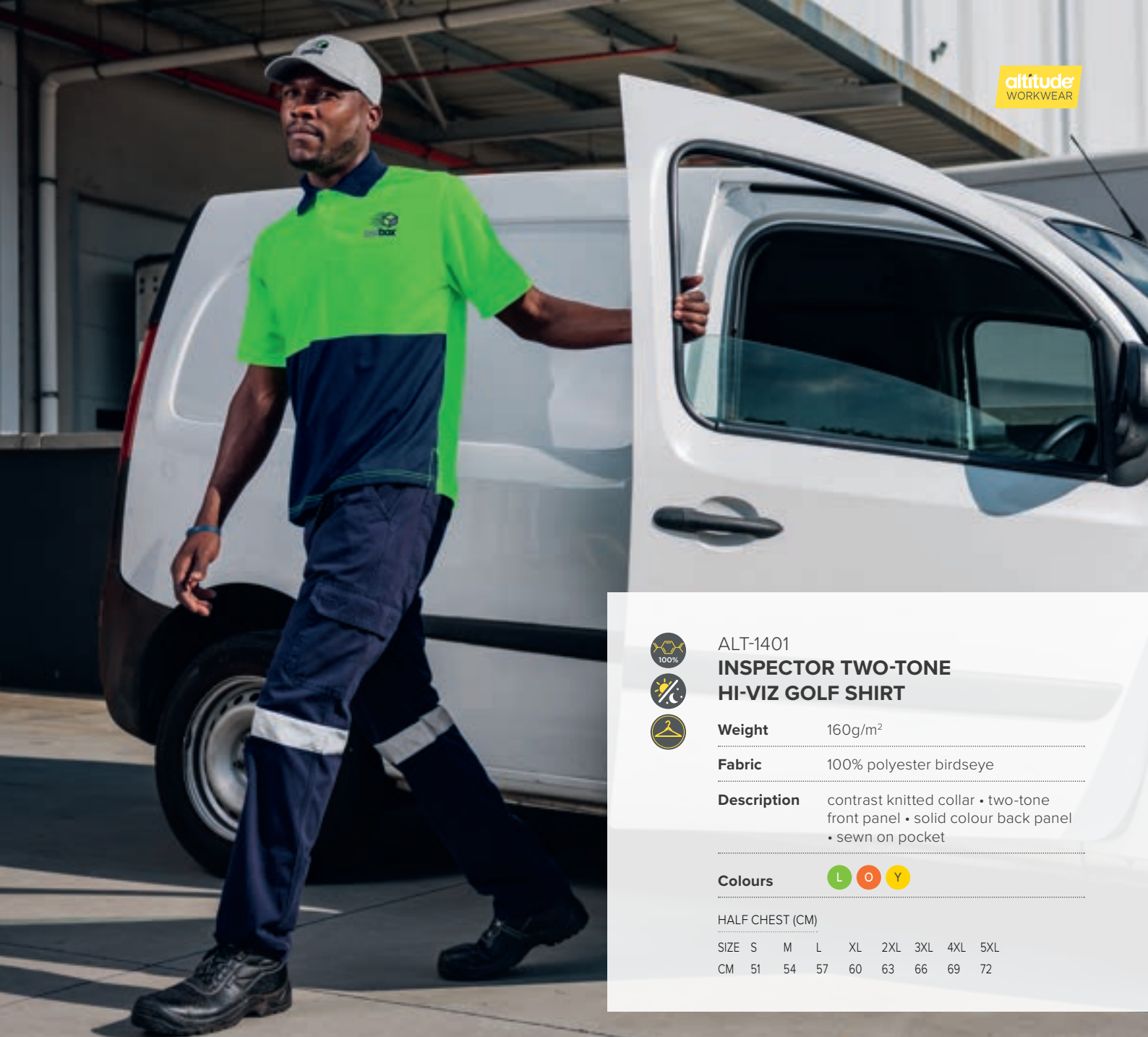
HALF CHEST (CM)

SIZE	S	M	L	XL	2XL	3XL	4XL	5XL
CM	51	54	57	60	63	66	69	72



PRICE INCLUDES SCREEN PRINT. SEE **PAGE 3** FOR DETAILS.





ALT-1401  
**INSPECTOR TWO-TONE  
HI-VIZ GOLF SHIRT**



**Weight** 160g/m<sup>2</sup>

**Fabric** 100% polyester birdseye

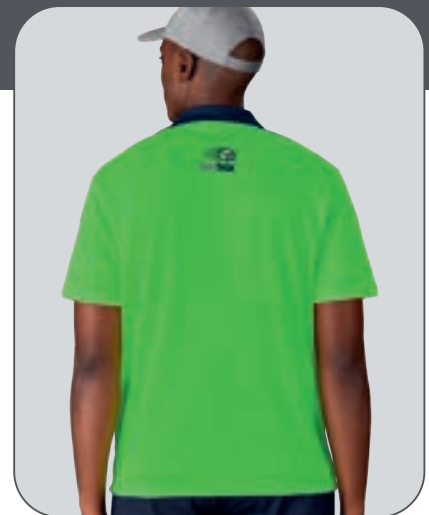
**Description** contrast knitted collar • two-tone front panel • solid colour back panel • sewn on pocket

**Colours** L O Y

HALF CHEST (CM)

SIZE	S	M	L	XL	2XL	3XL	4XL	5XL
CM	51	54	57	60	63	66	69	72

PAIR THE INSPECTOR TWO-TONE HI-VIZ GOLF SHIRT (ALT-1401) WITH THE SUPERVISOR PREMIUM CARGO REFLECTIVE PANTS (ALT-1121) FOR A COMPLETE LOOK. SEE PAGE W 64 FOR ALT-1121.



PRICE INCLUDES SCREEN PRINT. SEE PAGE 3 FOR DETAILS.



ALT-1402

**SURVEYOR TWO-TONE HI-VIZ  
REFLECTIVE GOLF SHIRT**



**Weight** 160g/m<sup>2</sup>



**Fabric** 100% polyester birdseye



**Description** contrast knitted collar • two-tone front and back panel • silver 50mm reflective tape detail



**Colours** L O Y

HALF CHEST (CM)

SIZE	S	M	L	XL	2XL	3XL	4XL	5XL
CM	51	54	57	60	63	66	69	72







PAIR THE SURVEYOR TWO-TONE HI-VIZ REFLECTIVE GOLF SHIRT (ALT-1402) WITH THE SUPERVISOR PREMIUM CARGO REFLECTIVE PANTS (ALT-1121) FOR A COMPLETE LOOK. SEE PAGE W 64 FOR ALT-1121.



ALT-1500



**ACCESS VENTED TWO-TONE REFLECTIVE WORK SHIRT**



**Weight** 145g/m<sup>2</sup>



**Fabric** 100% cotton



**Description** two chest pockets with flaps • vent under arm • garment features back vent below yoke with 3 bar tacks • silver 50mm reflective tape detail • double needle top stitching detail



**Colours**



HALF CHEST (CM)

SIZE	S	M	L	XL	2XL	3XL	4XL	5XL
CM	52	57	62	67	72	77	82	87







PAIR THE ACCESS VENTED TWO-TONE REFLECTIVE WORK SHIRT (ALT-1500) WITH THE SUPERVISOR PREMIUM CARGO REFLECTIVE PANTS (ALT-1121) FOR A COMPLETE LOOK.

ALT-1121  
**SUPERVISOR PREMIUM CARGO REFLECTIVE PANTS**

**Weight** 240g/m<sup>2</sup>

**Fabric** 100% J54 cotton twill

**Description** YKK zip • self-fabric waist with seven belt loops • cargo pockets with velcro closure flap • side entry front pockets • back pockets with velcro closure flap • back darts • silver 50mm reflective tape detail • top stitching detail • bar tacks at stress points

**Colours**



WAIST (CM)

SIZE	28	30	32	34	36	38	40	42	44	46	48	50	52
CM	72	77	82	87	92	97	102	107	112	117	122	127	132



CONCEALED, FOLDAWAY HOOD WITH VELCRO CLOSURE



ALT-1701

## HAZARD PADDED TWO-TONE HI-VIZ REFLECTIVE JACKET



### Fabric

100% polyester, 210D oxford with milky coating, padded and lined in quilted Tafetta



### Description

two-tone jacket with silver 50mm reflective tape detail • concealed zip features storm flap with press stud closure • inner pockets • eyelets under arms • concealed hood with drawcord and toggles • open end sleeve with knitted inner cuff • welt pockets with velcro closure flap • taped seams



### Colours



### CHEST (CM)

SIZE	S	M	L	XL	2XL	3XL	4XL	5XL
CM	118	126	134	142	150	158	166	174



QUILTED TAFETTA LINING & INNER POCKET



OPEN END SLEEVE



KNITTED INNER SLEEVE CUFF



PRICE INCLUDES EMBROIDERY. SEE PAGE 3 FOR DETAILS.





**SIRON**  
fire protection

GROUND  
FLOOR OFFICE









ALT-1702  
**TECHNO PADDED HI-VIZ  
REFLECTIVE BUNNY JACKET**

**Fabric** shell: 50% polyester, 50% cotton • inner: 100% polyester polar fleece

**Description** funnel collar • black d-ring tag at upper right front panel • ID pouch on left chest • multi-function sleeve pocket with chunky zip closure • right chest pocket with diagonal chunky zip • utility chest pocket with concealed velcro flap • zip-off sleeves • inner pockets • contrast ribbed cuffs and waistband • slanted welt pockets • silver 50mm reflective tape detail

**Colours** N O Y

HALF CHEST (CM)									
SIZE	S	M	L	XL	2XL	3XL	4XL	5XL	
CM	58	62	66	70	74	78	82	86	

ZIP-OFF SLEEVES



POLAR FLEECE LINING



PRICE INCLUDES EMBROIDERY. SEE PAGE 3 FOR DETAILS.



# RAINWEAR





Experience ultimate protection with our **RAINWEAR** collection, crafted from **PREMIUM QUALITY POLYESTER** fabrics that boast exceptional **DURABILITY** and **RESILIENCE**, making them ideal for **WET WEATHER** conditions.



**NEW**

WR-AL-5-F

**STORM RUBBERISED  
POLYESTER/PVC RAINCOAT**

**Weight** 280g/m<sup>2</sup> **Fabric** 28mm PVC polyester  
• hood • concealed storm flap • open end sleeves

**N** **Y**

HALF CHEST (CM) **STANDARD FIT**

S	M	L	XL	2XL	3XL	4XL	5XL
64	66	68	70	72	74	76	78







**NEW**

WR-AL-6-F

**HURRICANE RUBBERISED  
POLYESTER/PVC RAINSUIT**

**Weight** 280g/m<sup>2</sup> **Fabric** 28mm PVC polyester

- **jacket:** hood • elasticated cuff • storm flap
- **pants:** fully elasticated waistband

**N** **Y**

- the suit size is based on the size of the jacket

JACKET

S	M	L	XL	2XL	3XL	4XL	5XL
130	134	138	142	146	150	154	158

PANTS

S	M	L	XL	2XL	3XL	4XL	5XL
112	116	120	124	128	132	136	140





**NEW**

WR-AL-7-F



**TORNADO HI-VIZ REFLECTIVE  
RUBBERISED POLYESTER/PVC  
RAINSUIT**



**Weight** 280g/m<sup>2</sup> **Fabric** 28mm PVC polyester

• **jacket:** hood • elasticated cuff • storm flap • silver 25mm reflective tape detail • **pants:** fully elasticated waistband • silver 25mm reflective tape detail

**N O Y**

• the suit size is based on the size of the jacket

JACKET

S	M	L	XL	2XL	3XL	4XL	5XL
130	134	138	142	146	150	154	158

PANTS

S	M	L	XL	2XL	3XL	4XL	5XL
112	116	120	124	128	132	136	140







# SECURITY

Introducing our high-performance **SECURITY** wear, featuring a range of **PREMIUM** jerseys, shirts, pants, boots and belts designed to provide unbeatable **PROTECTION** and **FUNCTIONALITY** for **SECURITY PROFESSIONALS**.



**NEW**  
KZ-AL-2-F  
**FORCE SLEEVELESS JERSEY**

**Fabric** 100% acrylic

**Description** sleeveless • v-neck • epaulettes on shoulder • rib knit design

**Colours** **BL** **N**

HALF CHEST (CM) STANDARD FIT

SIZE	S	M	L	XL	2XL	3XL	4XL	5XL
CM	49	52	55	58	61	64	67	70







**NEW**  
KZ-AL-1-F  
**FORCE LONG SLEEVE JERSEY**

**Fabric** 100% acrylic

**Description** long sleeve • v-neck • epaulettes on shoulder • elbow pads • rib knit design

**Colours** **BL** **N**

HALF CHEST (CM)STANDARD FIT

SIZE	S	M	L	XL	2XL	3XL	4XL	5XL
CM	51	54	57	60	63	66	69	72





**GET THE JOB DONE**  
WITH THESE PRACTICAL  
AND DURABLE PANTS.



**NEW**

PW-AL-2-F  
**FORCE PANTS**

**Fabric** 100% polyester

**Description** wide belt loops • pleats • back welt pockets with button

**Colours** BL GY GY

HALF WAIST (CM)

SIZE	28	30	32	34	36	38	40	42	44	46	48	50	52
CM	36.5	39	41.5	44.5	47	49.5	52	54.5	57	59.5	62	64.5	67





**NEW**

SH-AL-2-F  
**FORCE COMBAT SHIRT**

**Weight** 190g/m<sup>2</sup>

**Fabric** polycotton twill

**Description** short sleeve • epaulettes on shoulder  
• pockets with button down flap

**Colours**



HALF CHEST (CM)

SIZE	S	M	L	XL	2XL	3XL	4XL	5XL
CM	51.5	53	57	60	63	66	69	72

PRICE INCLUDES EMBROIDERY. SEE **PAGE 3** FOR DETAILS.



**NEW**

PW-AL-1-F  
**FORCE MOCK COMBAT PANTS**

**Weight** 190g/m<sup>2</sup>

**Fabric** polycotton twill

**Description** wide belt loops • concealed button fly • back pocket with concealed button down flap • mock side pockets • drawcord on bottom hem

**Colours**



HALF WAIST (CM)

SIZE	28	30	32	34	36	38	40	42	44	46	48	50	52
CM	35.5	38	40.5	43	45.5	48	50.5	53	55.5	58	60.5	63	65.5



**NEW**

PW-AL-3-F

**FORCE WEB BELT**

**Fabric** 100% nylon

**Description** adjustable • metal buckle

**Colours** **BL**

**Size** one size



**NEW**

FT-AL-8-F

**TRACE UTILITY SOCKS**

**Fabric** 53% polyester, 29% viscose,  
16% polyamide, 2% elastane

**Description** padded sole

**Colours** **BL**

**Size** S & L



**NEW**

FT-AL-7-F

**FORCE COMBAT BOOT**

**Fabric** upper: breathable canvas  
• **sole:** polyurethane

**Description** lace-up • non steel toe cap

**Colours** **BL**

**UK Size** 4 - 13







# SAFETY WARMWEAR

When working in cold climates or extremely low temperatures, keeping your team **WARM AND FOCUSED ON THE JOB** is essential. Our safety warmwear provides the perfect solution to ensure that your team has the right gear to stay warm and **MAINTAIN THEIR PERFORMANCE**.



**NEW**  
JC-AL-125-A  
**ALARIS PADDED JACKET**

**Fabric** 100% oxford nylon

**Description** fully padded quilted inner • open end sleeves • two bottom patch pockets with press stud closure • shoulder epaulettes with press studs

**Colours** BL N

HALF CHEST (CM)

SIZE	S	M	L	XL	2XL	3XL	4XL	5XL
CM	61	64	67	70	72	77	80	82









  
DRAGON  
SECURITY





DETACHABLE ZIP-OFF HOOD



SHOULDER EPAULETTES



QUILTED TAFETTA LINING



OPEN END SLEEVE



KNITTED INNER SLEEVE CUFF



ALT-1700  
**SENTRY PARKA JACKET**

**Fabric** 70D / 190T 100% polyester, padded and lined in quilted Tafetta

**Description** detachable hood with drawcord and toggles • concealed zip features storm flap with press stud closure • inner pocket • open end sleeve with knitted inner cuff • two bottom patch pockets with press stud closure flap • jacket features chest patch pocket with press stud closure flap • eyelets under arms • shoulder epaulettes with press studs

**Colours** BL N OL

CHEST (CM)

SIZE	S	M	L	XL	2XL	3XL	4XL	5XL
CM	118	126	134	142	150	158	166	174



PRICE INCLUDES EMBROIDERY. SEE **PAGE 3** FOR DETAILS.







CONCEALED, FOLDAWAY HOOD WITH VELCRO CLOSURE



QUILTED TAFETTA LINING & INNER POCKET



OPEN END SLEEVE



KNITTED INNER SLEEVE CUFF

ALT-1701  
**HAZARD PADDED TWO-TONE HI-VIZ REFLECTIVE JACKET**

**Fabric** 100% polyester, 210D oxford with milky coating, padded and lined in quilted Tafetta

**Description** two-tone jacket with silver 50mm reflective tape detail • concealed zip features storm flap with press stud closure • inner pockets • eyelets under arms • concealed hood with drawcord and toggles • open end sleeve with knitted inner cuff • welt pockets with velcro closure flap • taped seams

**Colours** L O Y

**CHEST (CM)**

SIZE	S	M	L	XL	2XL	3XL	4XL	5XL
CM	118	126	134	142	150	158	166	174



PRICE INCLUDES EMBROIDERY. SEE PAGE 3 FOR DETAILS.







ALT-1702  
**TECHNO PADDED HI-VIZ REFLECTIVE  
BUNNY JACKET**

**Fabric**      **shell:** 50% polyester, 50% cotton  
                   **inner:** 100% polyester polar fleece

**Description**    funnel collar • black d-ring tag at upper right front panel • ID pouch on left chest • multi-function sleeve pocket with chunky zip closure • right chest pocket with diagonal chunky zip • utility chest pocket with concealed velcro flap • zip-off sleeves • inner pockets • contrast ribbed cuffs and waistband • slanted welt pockets • silver 50mm reflective tape detail

**Colours**            N O Y

HALF CHEST (CM)

SIZE	S	M	L	XL	2XL	3XL	4XL	5XL
CM	58	62	66	70	74	78	82	86

ZIP-OFF SLEEVES



POLAR FLEECE LINING



PRICE INCLUDES EMBROIDERY. SEE **PAGE 3** FOR DETAILS.







ALT-1800

### SHIFT SINGLE-LINED FREEZER JACKET

**Fabric**      **shell:** 105g/m<sup>2</sup>, 100% polyester oxford  
                  • **inner:** 180g/m<sup>2</sup>, 100% polyester quilted pongee

**Description**    hooded • monza style chest pocket • two monza style bottom pockets • elasticated cuffs • rated to work in environments as low as -5 degrees celsius

**Colours**      **N**

HALF CHEST (CM)

SIZE	S	M	L	XL	2XL	3XL	4XL	5XL
CM	62,5	65	67,5	70	72,5	75	77,5	80



ELASTICATED CUFFS →

PRICE INCLUDES EMBROIDERY. SEE **PAGE 3** FOR DETAILS.

ALT-1801

### SHIFT SINGLE-LINED FREEZER PANTS

**Fabric**      **shell:** 105g/m<sup>2</sup>, 100% polyester oxford  
                  • **inner:** 180g/m<sup>2</sup>, 100% polyester quilted pongee

**Description**    fully elasticated waistband • rated to work in environments as low as -5 degrees celsius

**Colours**      **N**

HALF WAIST STRETCHED (CM)

SIZE	S	M	L	XL	2XL	3XL	4XL	5XL
CM	48,5	51	53,5	56	58,5	61	63,5	66









ALT-1802  
**ARCTIC DOUBLE-LINED FREEZER JACKET**

**Fabric**      **shell:** 105g/m<sup>2</sup>, 100% polyester oxford  
                   • **padding:** 250g/m<sup>2</sup>, 100% polyester wadding  
                   • **lining:** 190g/m<sup>2</sup>, 80% polyester 20% cotton twill

**Description**    hooded • monza style chest pocket • two monza style bottom pockets • elasticated cuffs  
                           • rated to work in environments as low as -15 degrees celsius

**Colours**        **N**

HALF CHEST (CM)

SIZE	S	M	L	XL	2XL	3XL	4XL	5XL
CM	65	67,5	70	72,5	75	77,5	80	82,5



ELASTICATED CUFFS →

PRICE INCLUDES EMBROIDERY. SEE **PAGE 3** FOR DETAILS.

ALT-1803  
**ARCTIC DOUBLE-LINED FREEZER PANTS**

**Fabric**      **shell:** 105g/m<sup>2</sup>, 100% polyester oxford  
                   • **padding:** 250g/m<sup>2</sup>, 100% polyester wadding  
                   • **lining:** 190g/m<sup>2</sup>, 80% polyester 20% cotton twill

**Description**    fully elasticated waistband • rated to work in environments as low as -15 degrees celsius

**Colours**        **N**

HALF WAIST STRETCHED (CM)

SIZE	S	M	L	XL	2XL	3XL	4XL	5XL
CM	48,5	51	53,5	56	58,5	61	63,5	66



A man with a beard and short hair, wearing a bright red long-sleeved work shirt and matching red cargo pants, stands on a wooden pallet. He is wearing black rubber boots. The background is a wall of vertical corrugated metal sheets, some of which are rusted. The lighting is dramatic, highlighting the textures of the clothing and the background.

altitude  
WORKWEAR

No matter the industry,  
whether you're in  
Agriculture, Mining,  
Construction or  
Manufacturing –  
**ALTITUDE WORKWEAR**  
has been designed with  
**A PRIMARY FOCUS**  
**ON SAFETY,**  
**DURABILITY** and  
**RELIABILITY.**